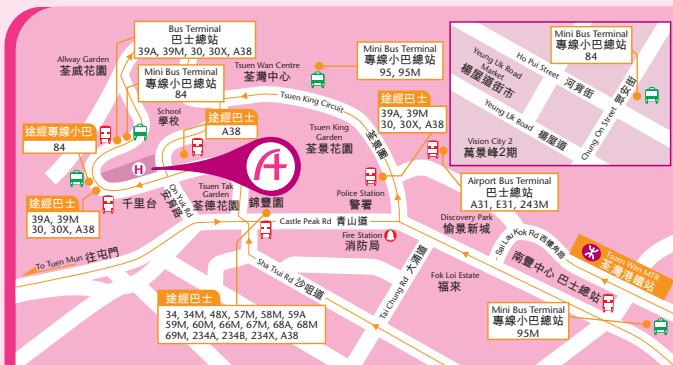


Map 路線圖



Bus 巴士

- | | | |
|-----|---------------------------------|--------|
| 39A | Tsuen Wan West Station | 荃灣西站 |
| 39M | Tsuen Wan MTR | 荃灣港鐵站 |
| 30X | Whampoa Gardens | 黃埔花園 |
| 30 | Cheung Sha Wan | 長沙灣 |
| A38 | Hong Kong International Airport | 香港國際機場 |

To the Hospital Via Castle Peak Road:

- + Alight at Tsuen King Circuit Flyover
- + Take the bus in front of Tsuen King Circuit Police Station

所有行經青山公路荃灣段之巴士：

- + 於荃景圍天橋站下車，
- + 然後步行至荃景圍警署轉乘巴士到醫院。

Minibus 專線小巴

- | | | |
|-----|---------------------------|-------|
| 95M | Tsuen Wan MTR | 荃灣港鐵站 |
| 95 | Nina Tower | 如心廣場 |
| 84 | Tsuen Wan Chung On Street | 荃灣眾安街 |

A 24 小時急診中心 Hours Urgent Care Center

Adventist Health 港安 Hong Kong Adventist Hospital · Tsuen Wan
香港港安醫院·荃灣

Address 地址：199 Tsuen King Circuit, Tsuen Wan, N.T.
新界荃灣荃景圍199號

Telephone 電話：(852) 2275 6688

Fax 傳真：(852) 2275 6767

Website 網站：www.twah.org.hk



Valid date 有效期至：2020/12/31

The Hospital reserves the right to change or amend details without prior notification.

For the latest information, please visit our website at www.twah.org.hk

如有任何資料調整或變更，本院毋須另行通知。

如欲查閱最新資料，請瀏覽本院網站www.twah.org.hk。

N-2001

Adventist 港 Health 安

Hong Kong Adventist Hospital · Tsuen Wan

香港港安醫院·荃灣

High Dependent Unit Admission 加護病房入住須知



Extending the Healing Ministry of Christ
延續基督的醫治大能

Adventist Hospital Critical Care Team 港安加護病房團隊

Our High Dependency Unit (HDU) is a highly specialized area reserved for critically ill patients who require close monitoring, intensive nursing care and complex organ support or intervention. The HDU is staffed 24 hours a day by critical care specialists, critical care nurses and other specialty physicians (depends on the clinical condition of the patient), who are committed to providing the highest level of clinical care and provide continuous high quality medical services for our critically ill patients.

Our mission is to provide high quality medical services. Patient safety and improvement in clinical outcome are always our top priorities. We are obliged to serve the best interests of our critically ill patients by providing necessary monitoring, investigations and interventions in a timely manner. Patients' vital signs are transmitted to a central nursing station monitored by our qualified nurses, so the HDU team is being informed and able to respond to any changes swiftly and efficiently. The unit is also positioned in close proximity to the Operating Theatres, Cardiac Catheterization and Intervention Center (CCIC), Endoscopy unit therefore patients can receive emergency treatments in the shortest possible time.

本院的加護病房是一個高度專業化的部門，並專為需要密切監測，深切護理和複雜的器官支援或介入治療後的危重病人而設。加護病房是由危重病學專家，重症監護護士和其他專科醫生（取決於患者的臨床狀況）組成團隊每日二十四小時持續運作，團隊會致力於提供最高水平的臨床護理，為重症患者提供持續的高質素醫療服務。

我們的使命是提供高質素的醫療服務。而病人的安全和改善其臨床果效始終是我們的首要任務。我們有責任適時透過必要的監測、檢查和治療，為危重病人提供合乎其最佳利益的服務。病人的生命表徵等數據會被傳送到護士站，並由合資格的護士監控，因此，加護病房團隊能夠迅速有效地處理任何變化。本部門還靠近手術室，心導管檢查及介入治療中心，及內視鏡檢查中心等部門，因此患者可以在最短的時間內接受有關的緊急治療。

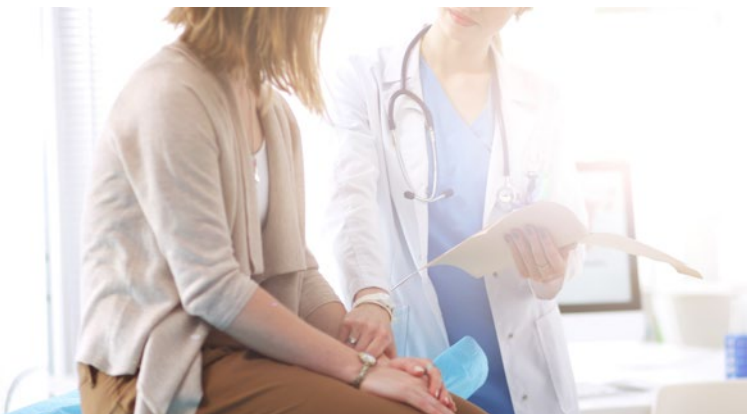
High Dependency Unit Charge 加護病房每日收費

Here is the HDU daily package (appendix 1) for your reference. However, the package does not cover the expenses of specific investigations or treatments. You will be informed about the potential financial estimation for each investigation or treatment and you are welcomed to discuss with our team anytime if you have any enquiries.

Remarks: In essence, treatment in HDU/ICU is very expensive, and total cost may well exceed the original estimate as patient's changing condition may demand extra tests, investigations, procedures and treatment pathways. And some expensive investigations may need to be repeated to monitor the situation of the patient to ensure the best outcome. You are well advised to consider the possible high costs, or to ascertain your level of insurance cover before you make your decision to be admitted. You are also welcomed to request transferring to other facilities or seeking second opinion during your stay.

附錄一是加護病房每日套餐式收費，以供閣下參考。但是，該方案並不包括特定調查或治療的費用。閣下將會獲得套餐收費以外，每項檢查或治療的財務估算，如果閣下有任何疑問，歡迎您隨時與我們的團隊討論。

註：實質上，加護病房的治療非常昂貴，並且其住院總收費用可能遠遠超過原始估計，因為病人的病情變化可能需要額外的檢驗，調查，程序和治療等，並可能需要重複一些昂貴的檢查以監測病人的情況以確保最佳效果。在閣下決定入住的同時，本院建議閣下考慮可能出現的高額費用，或確定您的保險條款。您亦可以在入住期間要求轉往其他醫院或尋求其他專業意見。



4 Commonly encountered procedures and their potential indications and risks 常見的程序及其潛在的適應症和風險

Arterial line 動脈導管置放術

i. Indications 臨床原因

Continuous blood pressure monitoring 持續性的血壓監測	Fluid status assessment 身體水分狀態評估	Titration of vasoactive medications 強心藥物的調控	Repeated blood taking 提取血液樣本
--------------------------------------------------	-------------------------------------	------------------------------------------------	---------------------------------

ii. Commonly inserted sites 插入管導的常見部位

Radial artery (wrist) 橈動脈 (手腕)	Dorsalis pedis (foot) 足背脈 (足)	Femoral artery (groin) 股動脈 (腹股溝)
-----------------------------------	----------------------------------	-------------------------------------

iii. Complications 可能導致的並發症

Insertion site infection 插入部位的感染	Bleeding 出血	Haematoma 血腫	Distal circulation compromise 遠端血循環不良
-------------------------------------	----------------	-----------------	------------------------------------------

Central venous catheter 中央靜脈導管置放術

i. Indications 臨床原因

Administration of concentrated and vasoactive medication 給予強心藥物	Monitoring of fluid status 監測身體水分狀態
--------------------------------------------------------------------	----------------------------------------

ii. Commonly inserted sites 插入管導的常見部位

Internal jugular vein (neck) 頸內靜脈 (頸部)	Subclavian vein (anterior chest) 鎖骨下靜脈 (前胸)	Axillary vein (anterior chest) 腋靜脈 (前胸)	Femoral vein (groins) 股靜脈 (腹股溝)
-------------------------------------------	------------------------------------------------	--------------------------------------------	------------------------------------

iii. Complications 可能導致的並發症

Pneumothorax 氣胸	Haemothorax 血胸	Vascular injury 血管損傷	Nerve injury 神經受傷
Subclavian stenosis 鎖骨下狹窄	Haematoma 血腫	Deep vein thrombosis 深靜脈血栓形成	

Mechanical ventilation 呼吸儀器

i. Indications 臨床原因

Respiratory failure 呼吸衰竭	Altered mental state 病人陷入昏迷狀態、或已經昏迷	Haemodynamic instability 維生指數不穩定	Upper airway obstruction 上呼吸道阻塞
-----------------------------	----------------------------------------	-------------------------------------	------------------------------------

ii. Complications 可能導致的並發症

Patient-ventilator dys-synchrony 與呼吸機不協調	Ventilator associated pneumonia 呼吸機相關肺炎	Ventilator induced lung injury 呼吸機引致的肺損傷			
		Barotrauma 氣壓傷	Volutrauma 容積傷	Atelectrauma 塌陷損傷	Biotrauma 生化損傷

Sedation (physical and pharmacological)

鎮靜病人 (物理和藥理學)

i. Indications 臨床原因

Facilitate painful and uncomfortable procedures like mechanical ventilation
幫助舒緩使用呼吸機時所出現的疼痛和不舒服

ii. Complications 可能導致的並發症

ICU delirium
深切治療環境下出現的譫妄

Deep vein thrombosis
深靜脈血栓形成

Prolonged mechanical ventilations and its associated complications
長時間的機械通氣及其相關並發症

Vasopressors/inotropes 血管加壓藥/正性肌力藥

i. Indications 臨床原因

Maintaining adequate haemodynamic status for a good organ perfusion
保持充足的血動力狀態以確保足夠的血液灌注各重要器官

ii. Complications 可能導致的並發症

Extravasation and tissue necrosis
外滲和組織壞死

Arrhythmia
心律失常

Distal circulation compromise
遠端血循環不良

Mycocardial infarction
心肌梗塞

Urinary catheter 導尿管

Nasogastric tube 鼻胃管

Depending on the clinical condition, various bedside investigations and invasive interventions may be required like:

根據臨床情況，病人可能需要進行各種臨床檢查和入侵性程序，例如：

- + Flexible laryngoscope
靈活式喉鏡
- + Tracheostomy
氣管造口術
- + Bronchoscope +/- broncho-alveolar lavage
支氣管鏡 +/- 支氣管 - 肺泡灌洗
- + Prone ventilation
俯臥式使用呼吸機
- + Extra-corporal membrane oxygenation
人工心肺
- + Chest drain insertion and drainage
胸腔引流管插入和引流
- + Bedside point of care ultrasound / echocardiography
床邊護理點超聲/超聲心動圖
- + Intra-aortic balloon pump
主動脈內球囊泵
- + Continuous EEG monitoring
持續的腦電圖監測
- + Renal replacement therapy
腎臟替代療法
- + Targeted temperature management / therapeutic hypothermia
目標性體溫管理/治療性低溫
- + Cardiopulmonary resuscitation
心肺復蘇
- + End-of-life tender loving care
臨終關懷護理

diagnosis with
診斷患上is admitted to High Dependency Unit
需入住加護病房

High Dependency Unit daily charges are listed as below:

加護病房每日收費如下列:

Items 項目	First Day 首日	Days afterward 由翌日起
HDU Doctor Management Fee 加護病房醫生費	✓	✓
HDU Nursing Care 加護病房護理費	✓	✓
HDU Room Charge 加護病房費	✓	✓
Hospital Service Charge 醫院服務費	✓	
4 Infusion Pumps 輸液泵 (4個)	✓	✓
Oxygen Therapy 氧氣治療	✓	✓
HDU Vital Signs Observation 加護病房生命表徵監察	✓	✓
BiPAP or High Flow Oxygen 雙相呼吸道正壓換氣輔助機	✓	✓
Central Venous Catheter Insertion 中央靜脈導管置放術	✓	
Arterial Line Insertion 動脈導管置放術	✓	
Diagnostic Imaging 診斷影像		
X-ray Chest X光檢查- 肺部	✓	✓
Electrocardiogram (Resting) 靜止心電圖	✓	✓
Laboratory Investigation 化驗室檢驗		
Activated Partial Thromboplastin Time (APTT) 活化部分凝血活酶時間	✓	✓
International Normalised Ratio (INR) 凝血酶原時間：國際標準比率	✓	✓
Complete Blood Count 全面血球計算	✓	✓
Blood Gas Profile 血液氣體分析	✓	✓
Lactate 乳酸	✓	✓
Cardiac Enzyme 心臟酵素	✓	✓
Renal Function Test 腎功能檢查	✓	✓
Liver Function Test 肝功能檢查	✓	✓
Price 費用	HK\$52,800	HK\$35,800 (Daily / 每日)

Points to note 注意事項**Excluding 不包括：**

- + Consultation fees for other specialists and their management fees, medication, unlisted laboratory and diagnostic imaging charges, unlisted clinical procedures, materials and nursing care costs, allied health service fee, surgery, meals, resuscitation services, patient escort services, etc. For further details, please contact hospital staff.
- + 其他專科醫生之顧問費及其巡房費、藥物、沒有列舉的化驗費及診斷影像費、沒有列舉之臨床程序、物料及其護理費用、專職醫療服務費用、手術費用、膳食、急救服務、運送病人服務等等。詳情請向本職員查詢。

For enquiries, please kindly contact our nursing staff.

I hereby acknowledge and accept the receipt of the fees quotation and confirm the understanding of the information and agree to the contents of this estimated price quote.

如有任何疑問，請與當值護士查詢。

本人特此確認明白並同意接受報價單之內容。

Visiting Information 探訪者資訊

To ensure that patients have adequate time to rest and recover, here are some of our recommendations.

- + Normally we recommended relatives come from 8:00 am to 10:00 pm daily so as to allow adequate rest for the patients.
- + Please wash your hands thoroughly before and after the visit.
- + Please do NOT touch any medical equipments, lines, tubings or wounds.
- + There should be NO more than two visitors at any one time.
- + Under usual circumstances, children below 12 years of age are advised NOT to enter.

為確保患者有足夠的時間休息和康復，以下是我們的一些建議

- + 一般情況下我們建議探病時間為每日上午8:00到晚上10:00，以便為患者提供充分的休息。
- + 請在探訪前後徹底洗手。
- + 請勿觸摸任何醫療設備，線路，管道或傷口。
- + 任何時候都不應超過兩名訪客。
- + 正常情況下，本院建議12歲以下的兒童不要探訪。

Contact means 聯繫方式

If you want to have any update, please approach the case nurse(s). Our team intensivists are happy to meet you in mutually convenient time.

如果需要任何更新資料，請諮詢值班護士。我們的團隊醫生很樂意在大家方便的時間下與您見面。



Like us on

Hong Kong Adventist Hospital - Tsuen Wan |

